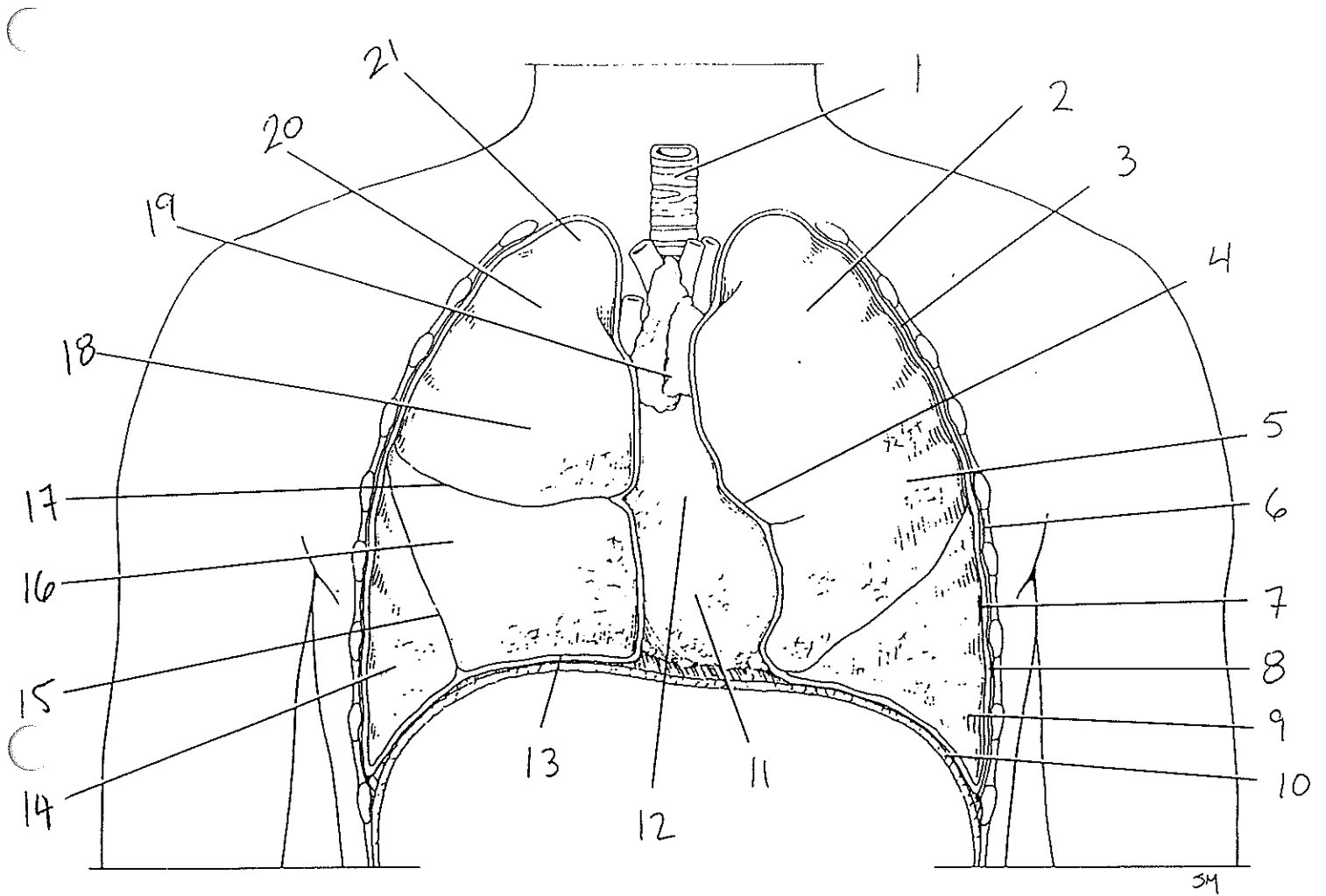
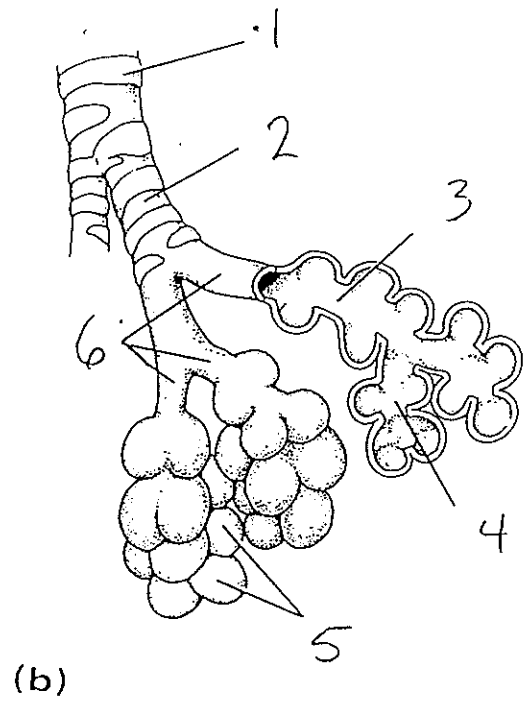
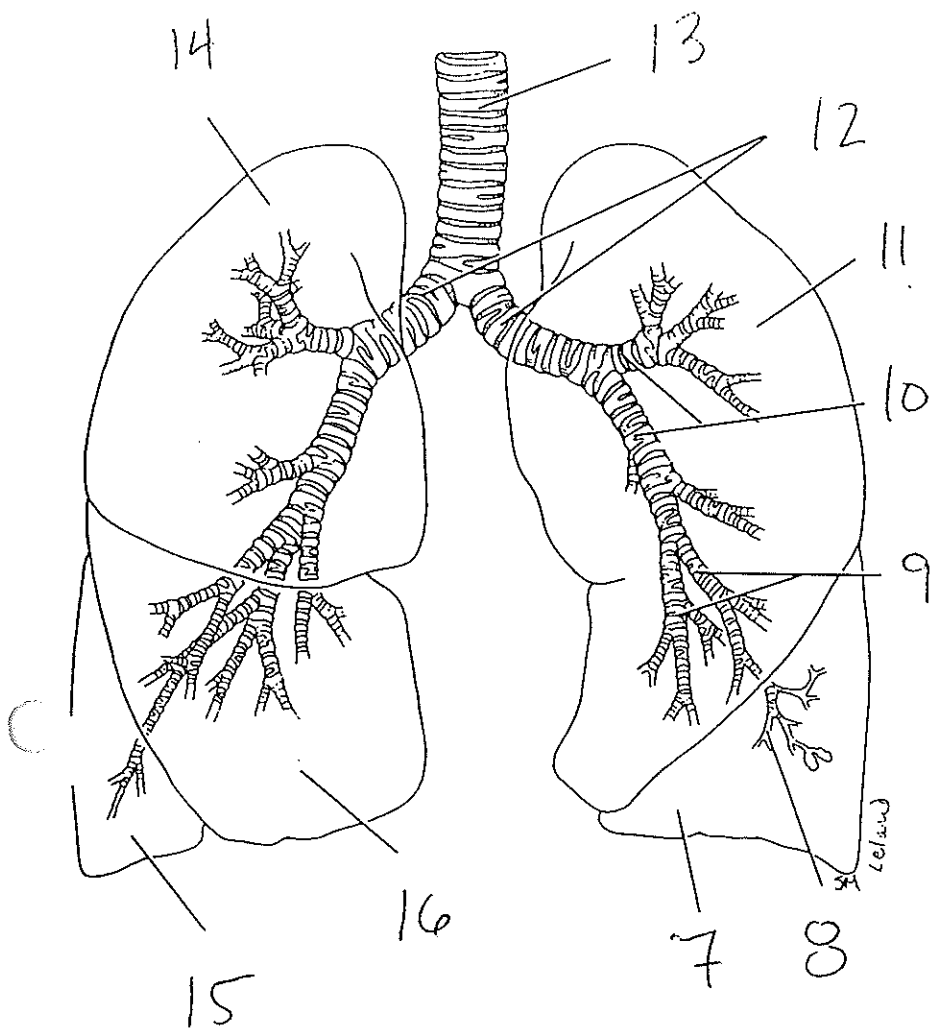


BIBLIOTHÈQUE  
CÉGEP BEAUCE-APPALACHES

Coupe sagittale médiane de la tête et du cou.

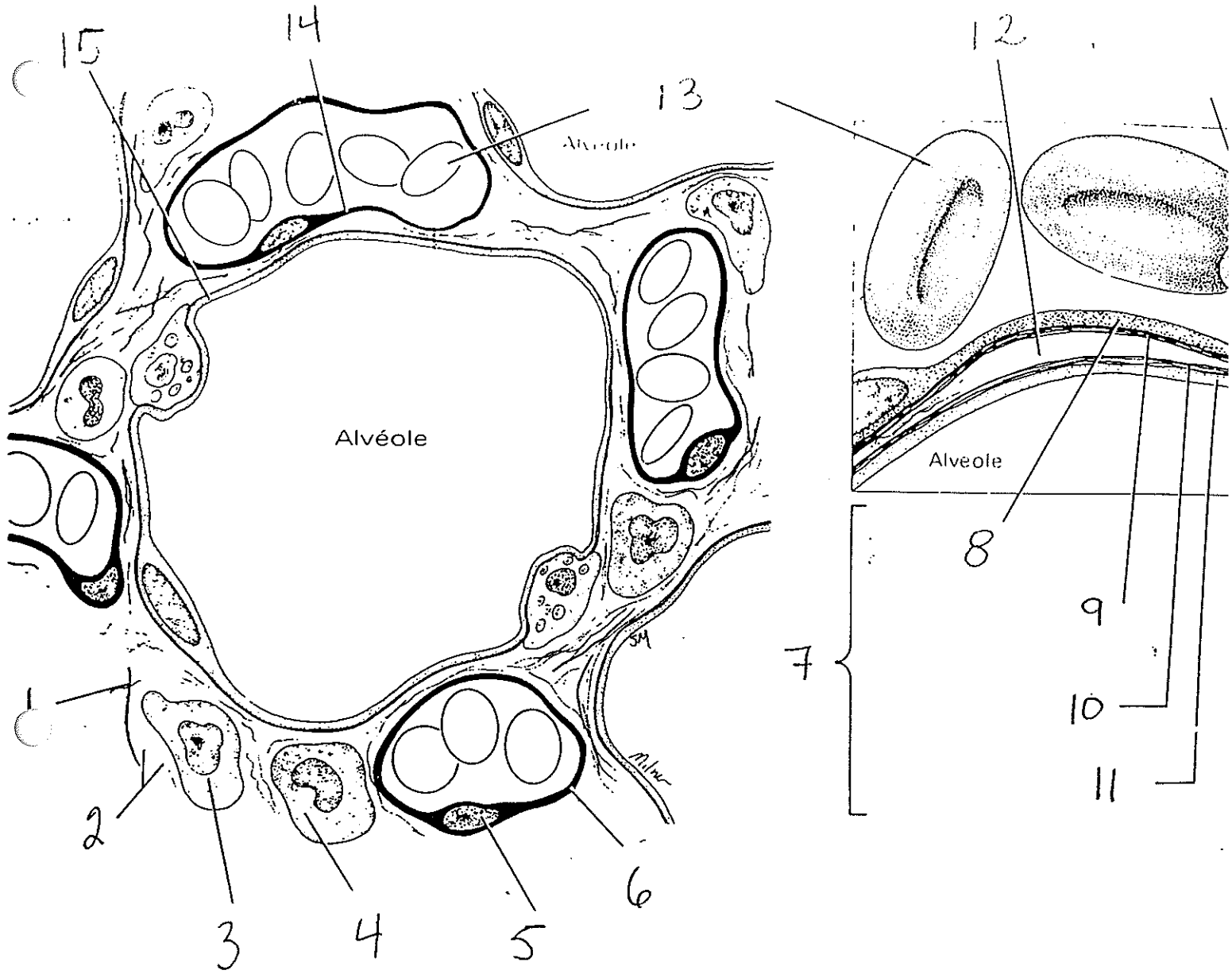


La cavité thoracique.

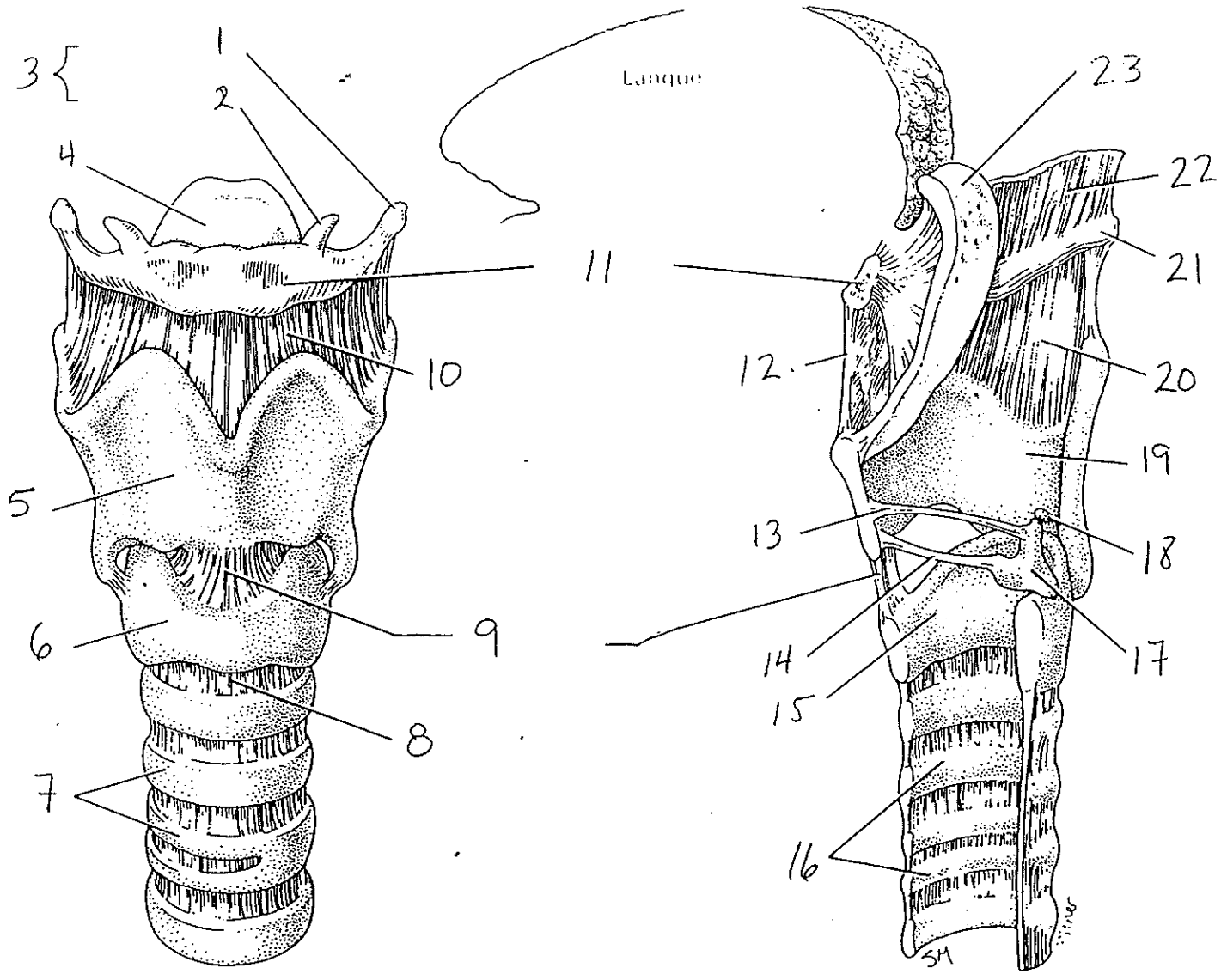


Zone de conduction et zone respiratoire

BIBLIOTHÈQUE  
CÉGEP BEAUCE-APPALACHES



Alvéole.



BIBLIOTHÈQUE  
CÉGEP BEAUCE-APPALACHES

Le larynx.